

# Helpman PX 4

## Specifications

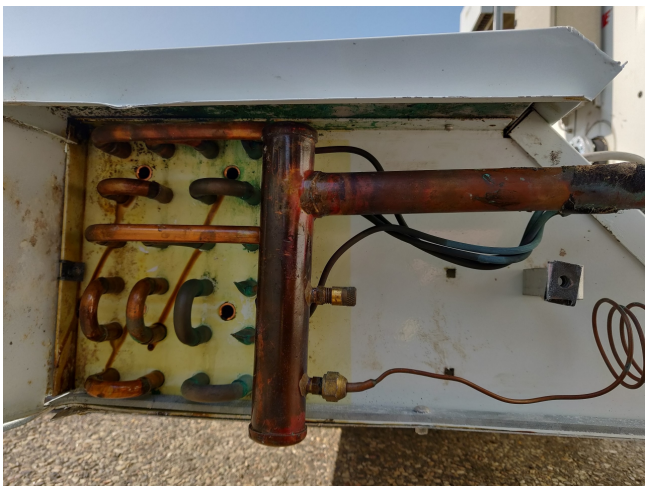
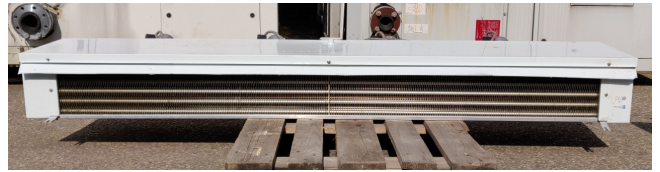
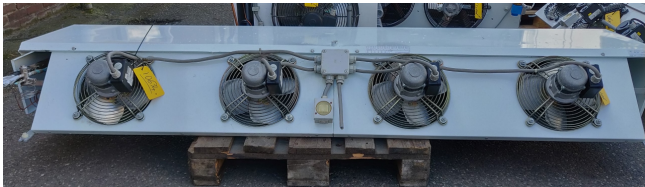
Brand	Helpman
Type	PX 4
kW	6
Refrigerant	Freon
Number of Fans	4
Fin Space in mm	7
Defrosting	Hot Gas
m <sup>3</sup> /h	4000
Remarks	23 m2
Volume	6.8 dm3
Weight	66 kg
Stock	1

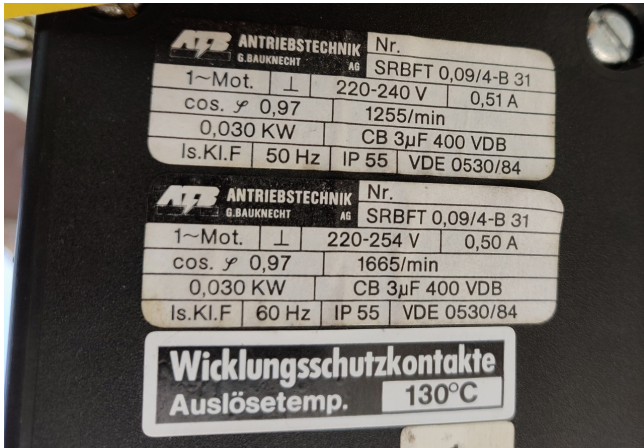


## Description

### Used Helpman PX 4

Used Low height air cooler build by Helpman type PX 4 with 6kW and 4000 m<sup>3</sup>/h, 23m<sup>2</sup> and 6.8dm<sup>3</sup>. \*All components of this used evaporator will be tested on good working, leak free condition (electro engines), coils, bearings) Choosing HOSBV means buying with warranty. We perform a industrial cleaning. Also, we can arrange your shipment.





## Capaciteiten & Technische gegevens

Koelen model	Capaciteiten R404A / R507A (kW)				Ventilatoren								
	Berijpt $t_e = 8^\circ\text{C}$ $DT_e = 8\text{K}$	Droog $t_e = 8^\circ\text{C}$ $DT_e = 8\text{K}$	Lucht- hoev. $\text{m}^3/\text{h}$	Koel- opp. $\text{m}^2$	Inn. vol. $\text{dm}^3$	Gewicht kg	Aantal	Diam. mm	Vermogen $V^*$ nom. opgenomen 230/1 400/3	Worp m	Geluids- niveau dB(A)	Kabel- invoer wartels	
PX 1-7	1.4	1.2	1000	5.7	1.7	17	1	254	30/80	30/65	10	48	2 x M20 x 1.5
PX 2-7	2.9	2.5	2000	11.5	3.4	33	2	254	30/80	30/65	10	51	2 x M20 x 1.5
PX 3-7	4.5	3.9	3000	17.2	5.1	50	3	254	30/80	30/65	10	53	2 x M20 x 1.5
PX 4-7	8.0	5.2	4000	23.0	6.8	66	4	254	30/80	30/65	10	54	2 x M20 x 1.5
PX 5-7	7.4	6.4	5000	28.7	8.5	73	5	254	30/80	30/65	10	55	2 x M20 x 1.5
PX 6-7	8.8	7.7	6000	34.5	10.2	90	6	254	30/80	30/65	10	56	2 x M20 x 1.5

\* Vermogen per motor. Het opgenomen vermogen van de ventilatoren is een laboratoriumwaarde gemeten bij een omgevingstemperatuur van 20 °C. Afhankelijk van de condities ter plaatse dient men rekening te houden met mogelijke afwijkingen.

Afmetingen